

# DIRECTIONS FOR USE

**exofin**fusion<sup>®</sup>  
SKIN CLOSURE SYSTEM

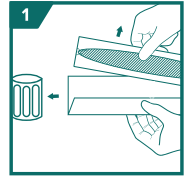
EF70422CE 22cm

EF70430CE 30cm

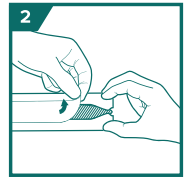
EF70466CE 60cm

## MESH APPLICATION

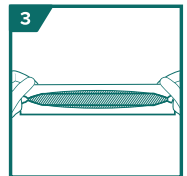
- 1** The application of **exofin fusion**<sup>®</sup> system requires thorough wound cleansing. Follow standard surgical practice for wound preparation before application of **exofin fusion**<sup>®</sup> (i.e., cleanse, irrigate, debride, obtain hemostasis, and close deep layers such that there is no tension on the skin). The skin edges must be closely approximated prior to application of the mesh, such that significant manual approximation is not required during mesh application.
- 2** Pat the wound dry with sterile gauze to assure direct tissue contact for adherence of the mesh and the liquid skin adhesive to the skin.
- 3** Remove the formed tray from the sealed bag and aseptically transfer the entire tray to the sterile field. Remove the lid from the tray to access the device components.
- 4** **Exofin fusion**<sup>®</sup> is applied in a 2-step process with either 1 mesh patch and 2 applicators, or 2 mesh patches and 3 applicators for dispensing the liquid skin adhesive. Steps for application of **exofin fusion**<sup>®</sup> are illustrated on the right. Remove the mesh patch from the mesh carrier (Fig. 1). Remove the center section of the release backing paper from the mesh (Fig. 2). Hold the mesh by the corners of the backing paper, ensuring the pressure-sensitive adhesive (PSA) will be on the mesh side that will be adhered to the patient's skin (Fig. 3).
- 5** Position the mesh so one half is on either side of the incision, ensuring that at least 1 cm of mesh extends from each end of the incision (Fig. 4).
- 6** Press gently to ensure intimate contact of the mesh to the selected side of the incision.
- 7** Gently pull the mesh perpendicularly over the incision while adjusting with fingers or forceps to achieve skin edge approximation and affix the remainder of the mesh to the other side of the incision (Fig. 5). Ensure the mesh is placed at least 1 cm from each of the ends of the incision. Use sterile scissors to trim any excess mesh, if necessary.
- 8** Remove the remaining paper backing (Fig. 6).
- 9** Ensure that the mesh is in full contact with the skin prior to application of the liquid skin adhesive. If there are areas where the mesh is loose, gently pass a gloved finger or instrument over the affected area to ensure complete adherence of the mesh to the skin. If the mesh is still not adhered to the skin, carefully cut any affected segments of the mesh and remove them from the skin. Ensure the skin edges are clean and dry and reapply new mesh according to the directions for use, overlapping the end of the existing mesh by approximately 1 cm. The liquid skin adhesive should be applied over the entire mesh and slightly over on to the surrounding skin. The adhesive should be applied immediately after the mesh has been properly placed over the incision. **Pat the deployed mesh dry gently with dry sterile gauze in the event of bodily fluid seepage without disturbing skin edge approximation prior to spreading the adhesive over the mesh.**



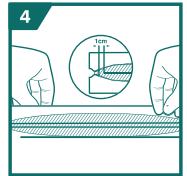
**1**  
Remove patch from carrier



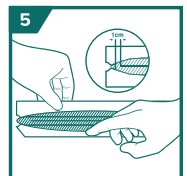
**2**  
Remove center



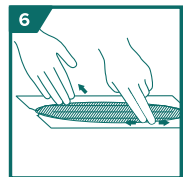
**3**  
Hold mesh by corners



**4**  
Center with 1 cm past each end of incision



**5**  
Gently pull over incision

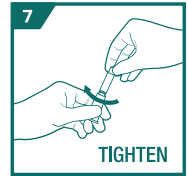


**6**  
Remove remaining backing

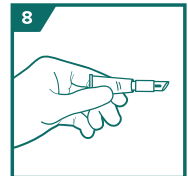
## ADHESIVE APPLICATION

- 10** Activate the liquid topical skin adhesive by twisting the connector containing the applicator tip onto the tube to break the sterile seal (Fig. 7). **DO NOT OPEN ADHESIVE UNTIL READY TO APPLY.**
- 11** While holding the tube in a horizontal position, squeeze the tube at the “X” near the crimped end to release the pressure and air from the tube (Fig. 8). Activate the adhesive by pointing applicator tip down and expressing three drops onto a surgical drape (Fig. 9). Now that adhesive is flowing from applicator tip, continue squeezing and applying pressure to the tube while painting the surface of the mesh, including slightly off the mesh to the surrounding skin, until the entire mesh surface is fully covered (Fig. 10).
- 12** In the event the glue runs out before fully covering the mesh and surrounding skin, simply open another tube of adhesive that is supplied in the package and follow Steps 8 and 10.
- 13** Once complete coverage is achieved, do not touch any part of the mesh or surrounding skin for approximately 60 seconds.
- 14** After 60 seconds has past, lightly touch the surface with a clean gloved finger to ensure the adhesive has fully polymerized/dried before applying any other dressing or covering of any kind (including gown or sheet) (Fig. 11).
- 15** Mesh should remain in place on the patient up to 14 days after application with proper aftercare.

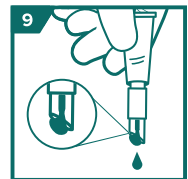
**NOTE: DO NOT APPLY A SECOND COAT OF ADHESIVE TO MESH PATCH WITH ADHESIVE.**



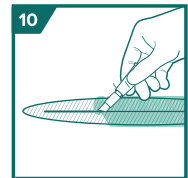
Twist tip onto tube



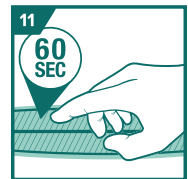
Express air



Express three drops



Apply adhesive



Let dry



54560022 REV1.0 V05152023